

MAMMOGRAPHY & CANCER DETECTION SERVICE

Rtn Mehul Girish Patel



INTRODUCTION

During the Installation Ceremony, PDG (2020-21) Rtn Prashant Jani proposed that there should be a Mobile Cancer Detection Service in our District 3060. Rtn Parimal Naik of RC Gandevi contacted RC Chikhli River Front for Cancer Detection On Wheels Project which was adopted immediately by us and PDG Rtn Prashant Patel gave us go ahead with this global grant project and saw to it that the Grant would be successful.

This is one of the First Project where around 30 clubs and NGOs contributed. The Cancer Detection Vehicle was inaugurated by Swami Gynanvatsaldasji of BAPS in presence of DG, PDGs, and members from various clubs and NGOs and other delegates.

OUR SINCERE THANKS TO OUR MAJOR DONOR RTN HARSHADBHAI & INDIRABEN PATEL OF SADADVEL –USA RTN PARIMAL NAIK IS ONE OF THE MEMBERS WHO WAS INVOLVED IN THIS GLOBAL GRANT PROJECT WITH TEAM.

**MORE THAN 30
ROTARY CLUBS
AND NGOs JOINED
TOGETHER TO
SUPPORT THIS
PROJECT
THROUGH GLOBAL
GRANT
THANKS TO
EVERYONE**

OUR CONTRIBUTORS

**SMT. INDIRABEN & HARSHAD
BHAJI PATEL, SADAKPORE-USA
R C CHIKHLI RIVER FRONT
R C GANDEVI
R C EMORY-DRUID HILLS
R C BAKERSFIELD USA
RI DISTRICT 3060
RI DISTRICT 6900
AIPNO MEDICAL YATRA, USA
DIWALIBEN TRUST, USA
PLAYFUL INDIA FOUNDATION
MANGALA PREM TRUST
R C ANKLESHWAR
R C BARDOLI
R C BILLIMORA**

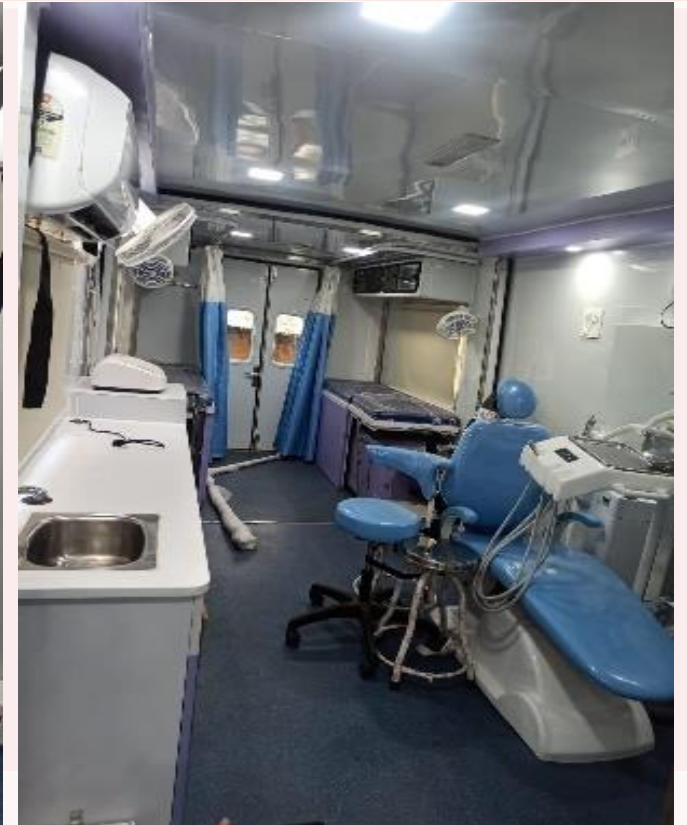
**R C CHARLOTTE HALL
R C DHULE CROSS ROAD
R C DHULE FEMINA
ROTARY DISTRICT 5330
ROTARY DISTRICT 7620
ROTARY DISTRICT 5300
R C DONDAICHA SENIORS
R C LAS VEGAS
R C NAVSARI
R C NEWPORT-IRVINE
R C SARIGAM
R C SURAT TAPI
R C SURAT RIVERSIDE
R C VALSAD
R C VAPI WEST
VASUDHARA DAIRY, ALIPORE**



FACILITIES AVAILABLE

FACILITIES AVAILABLE IN THE VEHICLE

- 1) MAMMOGRAPHY MACHINE
- 2) DIGITAL X-RAY MACHINE
- 3) iBreastExam SCANNER MACHINE
- 4) ORAL CANCER CHECK-UP CHAIR
- 5) CERVICAL CANCER
- 6) PSA TEST FACILITY
- 7) HEMATOLOGY BLOOD COUNT MACHINE
- 8) ONLINE REPORTING FACILITIES
- 9) FULLY AIR-CONDITIONED VEHICLE
- 10) HYDRAULIC EXTENTION VEHICLE



TYPES OF CANCER CAN BE DETECTED

CANCER DETECTION

- BREAST CANCER
- CERVICAL CANCER
- ORAL CANCER
- HEAD & NECK CANCER
- LUNGS CANCER
- PROSTATE CANCER



Alipore Social Welfare Trust
ALIPORE HOSPITAL

ROTARY CLUB OF CHIKHLI RIVER FRONT
&
ROTARY CLUB OF GANDEVI




MOBILE CANCER DETECTION UNIT

PERFORMANCE

CANCER DETECTION-ON-WHEELS



IN VARIOUS VILLAGES & TOWNS

- ❑ THE FIRST MOBILE CANCER DETECTION CAMP WAS STARTED ON **28TH NOV 2021**
- ❑ **782** MAMMOGRAPHY TESTS WERE DONE TILL 30TH OF JUNE 2023
- ❑ **6,685** iBreastExam Scan were performed
- ❑ **5,243** PAP SMEAR TEST were performed
- ❑ **67** X-RAYS were performed for Lungs Cancer
- ❑ **396** ORAL CANCER DETECTION TESTS
- ❑ **91** CBC Performed
- ❑ **107** ECG were performed
- 14,194 TESTS WERE PERFORMED AT VARIOUS VILLAGES AND TOWNS**



Many cancers
can be cured


if diagnosed early and
treated appropriately



Alipore Social Welfare Trust
ALIPORE HOSPITAL

ROTARY CLUB OF CHIKHLI RIVER FRONT
&
ROTARY CLUB OF GANDEVI

MOBILE CANCER DETECTION UNIT



PERFORMANCE

FREE CANCER AWARENESS PROGRAMMES AND CAMPS
were also organized at

ALIPORE HOSPITAL

- ❖ 149 MAMMOGRAPHY
- ❖ 1,922 iBreastExam Scans
- ❖ 1,336 PAP SMEAR TESTS
- ❖ 39 PSA PROSTATE CANCER
- ❖ 130 CBC
- ❖ 379 X-RAYS

TOTALING TO 3,955 Persons
were checked Free of Cost at
ALIPORE HOSPITAL



14,194 TESTS AT CAMPS + **3,955** TESTS AT ALIPORE
HOSPITAL TOTALLING TO **18,149** TESTS DONE TILL DATE

OUR TEAM AT WORK

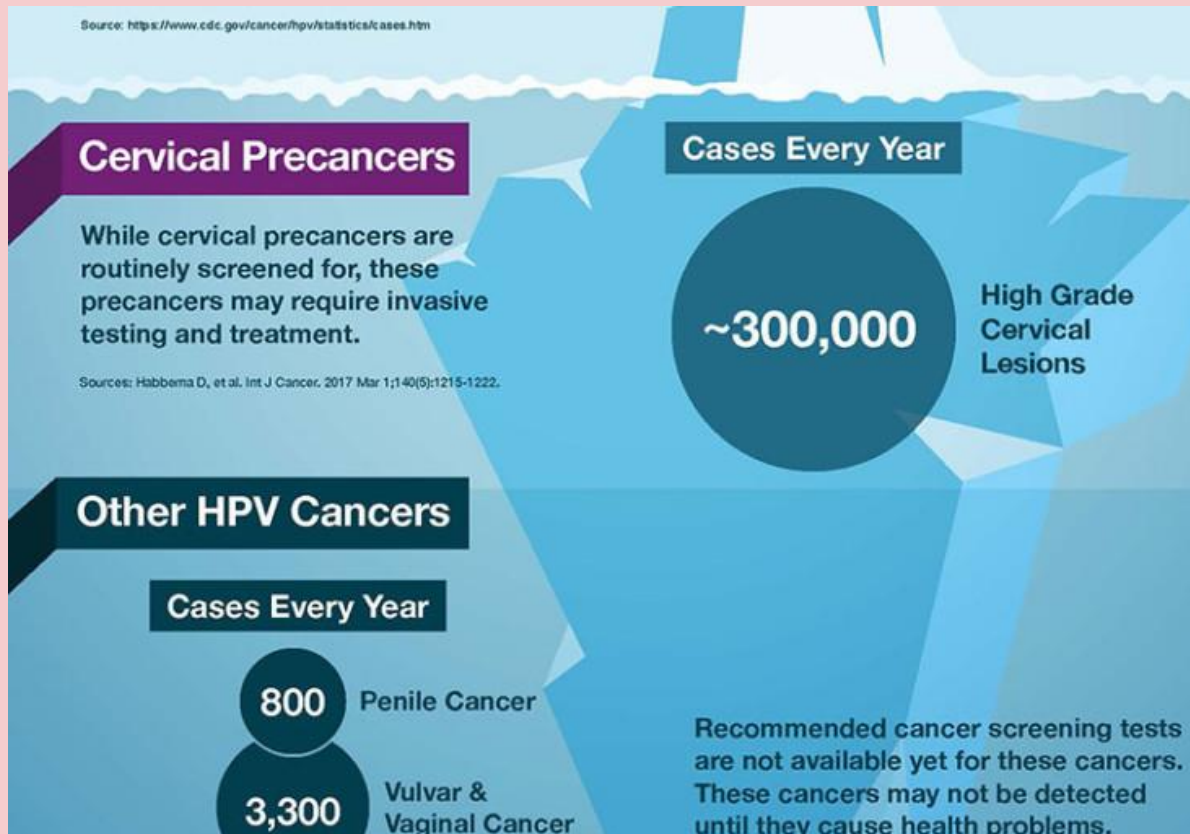
9



RC CHIKHLI RIVER FRONT EXPRESS GRATITUDE TO ALIPORE HOSPITAL TEAM

WHY MORE CONCENTRATION ARE GIVEN FOR BREAST & CERVICAL CANCER CAMPS?

- Women are shy or reluctant to inform their health problems to family due to socio-economic or have emotional problems
- Breast & Cervical Cancer can be cured if timely treatment is done.



W
PRATIKSHA
HOSPITAL

Latest Breast Cancer Screening Tool

1 in 21 women will develop breast cancer over the course of her lifetime.

iBE

- ◆ Quick
- ◆ Painless & Radiation Free
- ◆ Suitable for ladies after 25 yrs. of age
- ◆ Instant Results



**ORAL
CANCER
CHECKS
CAN BE
DONE IF
LOCAL
Drs are
Available**

AT YOUR SERVICE

OUR SERVICES ARE AVAILABLE ON PRIOR APPOINTED DATE

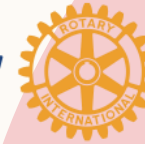
FOR MORE DETAILS, PLEASE CONTACT

MR SUHEL SHAH +91-99794 93698

District 3060

Rotary

Chikhli River Front



Alipore Hospital



OUR VARIOUS PROJECTS MAKING DIFFERENCE IN THE COMMUNITY

MALNOURISHMENT TO NOURISHMENT PROJECT

137 identified Malnourished Children are adopted by RCCRF and are given DAILY Nourished Food at various Chikhli Taluka Villages



FREE AMBULANCE SERVICE

Hospital to Hospital Free Transport of Patients within the radius of 30 Kms from Chikhli

FREE BLOOD COLLECTION SERVICE

Our Vehicle goes right in the villages to collect blood and donates blood to the blood bank



FREE AKSHARYAAN SERVICE

Journey to the last destination (Hearse Service) is given Free of Cost to the local community.



MAINTAINING TREES Since past three years we maintain trees and plant along the State Highway and villages



THANK YOU

Rtn Mehul Patel

Saarthi President

Rotary Club of Chikhli River Front

